

CELEBRATING 10 YEARS OF DESIGN

# CTC & G

Connecticut Cottages and Gardens

GOTTAGESGARDENS.COM | MAY 2014

*Splendor* in the  
**Garden**

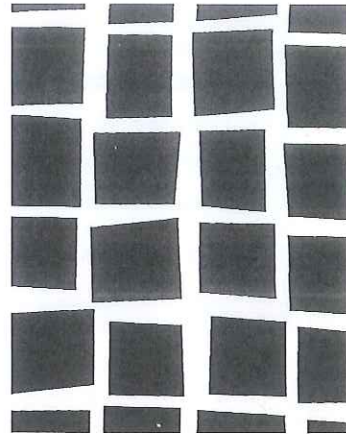
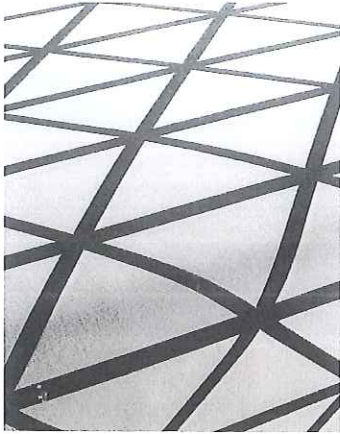




FABRICS

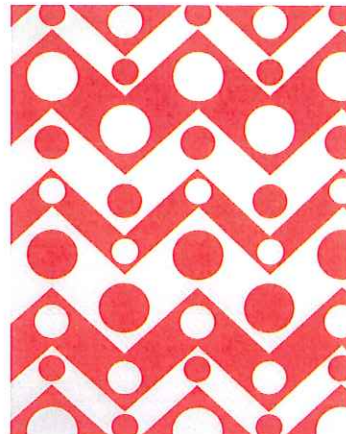
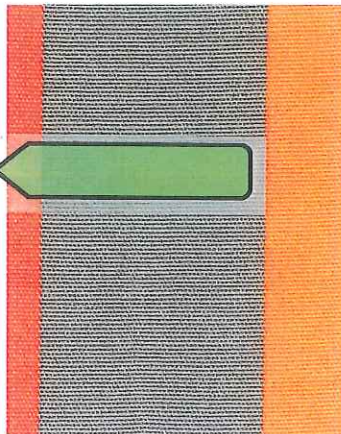
# Take Cover

OUTDOOR-APPROVED FABRICS UPHOLSTER YOUR WORLD IN UNEXPECTED COLORWAYS AND SPLASHY GRAPHICS



## SALT & PEPPER

(LEFT TO RIGHT)  
**Jab's Profile** in 16, D&D, 212-486-1500, [jab.de/en](http://jab.de/en). **Beacon Hill's Mei Festival** in charcoal, D&D, 212-421-1200, [beaconhilldesign.com](http://beaconhilldesign.com). **Link Outdoor's Cubed Carbon**, through Hines & Co., D&D, 212-754-5880, [hinescompany.com](http://hinescompany.com), [linkoutdoor.com](http://linkoutdoor.com).



## TANGERINE TANGO

(LEFT TO RIGHT)  
**Clarence House's OD Ramo** in orange, D&D, 212-752-2890, [clarencehouse.com](http://clarencehouse.com). **Janus et Cie's La Valencia** in Sunrise, NYC, 212-752-1117, [janusetcie.com](http://janusetcie.com). **Duralee's Ravello** in Adobe, D&D, 212-752-4040, [duralee.com](http://duralee.com).



## MY BLUE HEAVEN

(LEFT TO RIGHT)  
**Manuel Canovas' Tamia** in Azur, through Cowtan & Tout, D&D, 212-753-4488, [cowtan.com](http://cowtan.com). **Schumacher's Carmel Coastline** in Surf, D&D, 212-415-3900, [fschumacher.com](http://fschumacher.com). **Nomi Fabric's Plisse** in Aegean, through Hines & Co., D&D, 212-754-5880, [hinescompany.com](http://hinescompany.com), [nomiinc.com](http://nomiinc.com).

D&D showrooms listed are to the trade only.